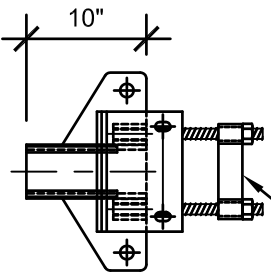
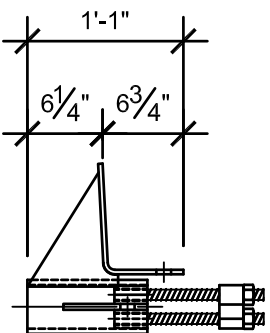


4021 BRACKET - 2 7/8" Ø HELICAL PILE

FASTENING STRAP WITH
1" DIA. ALL THREADS
AND NUTS

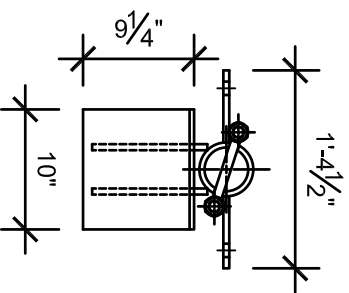


FRONT VIEW



4 1/2" Ø SLEEVE

SIDE VIEW

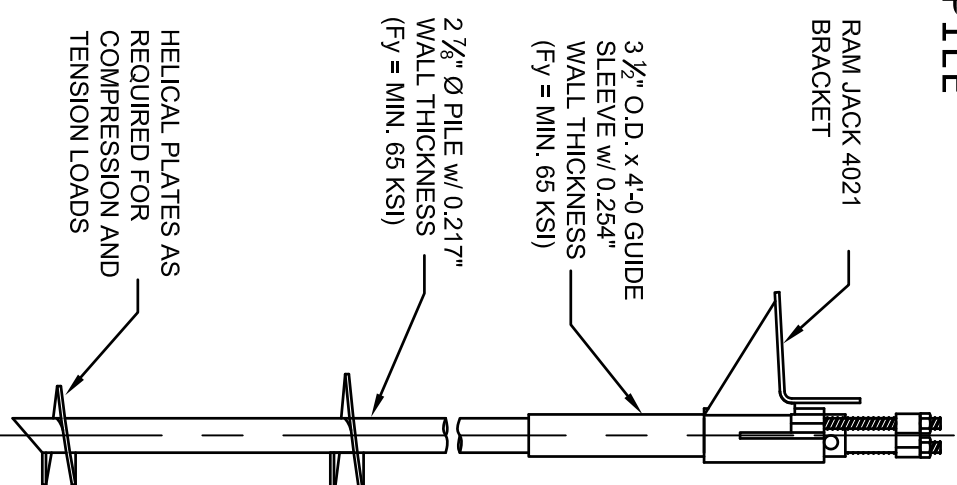


TOP VIEW

NOTES:

LOAD CHART	
ULTIMATE PILE ASSEMBLY CAPACITY	67,400 LBS
ALLOWABLE PILE ASSEMBLY CAPACITY (S.F. = 2)	33,700 LBS
TORQUE RATING OF 2 7/8" DIA. PILE	8,200 FT-LBS
TORQUE CORRELATION FACTOR	9
BEARING AREA	90 IN ²

- POLYETHYLENE COPOLYMER THERMOPLASTIC COATING PER ICC-ES AC228.
- MANUFACTURER TO HAVE IN EFFECT INDUSTRY RECOGNIZED WRITTEN QUALITY CONTROL FOR ALL MATERIALS AND MANUFACTURING PROCESSES.
- ALL WELDING IS TO BE DONE BY WELDERS CERTIFIED UNDER SECTION 5 OF THE AWS CODE D1.1.
- THE CAPACITY OF THE UNDERPINNING SYSTEM IS A FUNCTION OF MANY INDIVIDUAL ELEMENTS, INCLUDING THE CAPACITY OF THE FOUNDATION, BRACKET, PIER SHAFT, HELICAL PLATE, AND BEARING STRATA, AS WELL AS THE STRENGTH OF THE FOUNDATION BRACKET CONNECTION AND THE QUALITY OF THE INSTALLATION OF THE PILE. YOUR ACHIEVABLE CAPACITIES COULD BE HIGHER OR LOWER THAN THOSE LISTED DEPENDING ON THE ABOVE FACTORS.



TYP. INSTALLATION
SCALE: 3/4" = 1'-0



RAM JACK

4021 BRACKET	CATALOG NO. : SEE TABLES	REV. 1
SCALE 3/4" = 1'-0	DRAWN BY SA	DATE: 09/29/15
		SHEET 1 OF 1